

HANDS ON FINAL

CLASSFUL ADDRESSING CLASS "C" ADDRESS

***Frank Schneemann MS EdTech
Cisco Netacad***

CLASS C ADDRESS

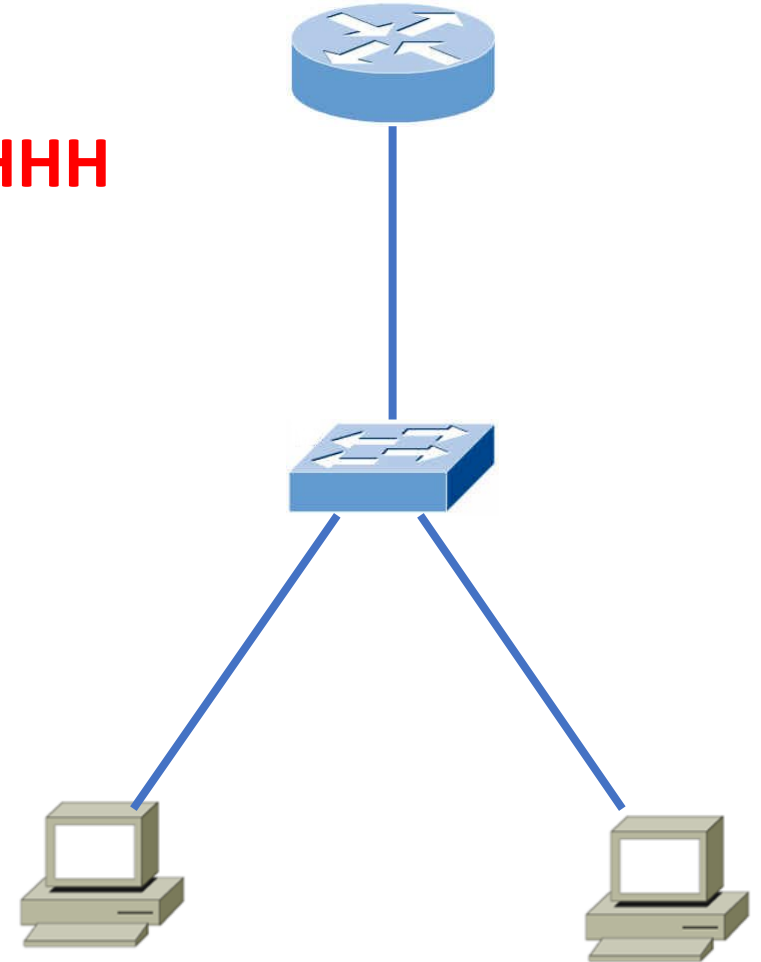
192.168.20.0

NNNNNNNN.NNNNNNNN.NNNNNNNN.HHHHHHHH

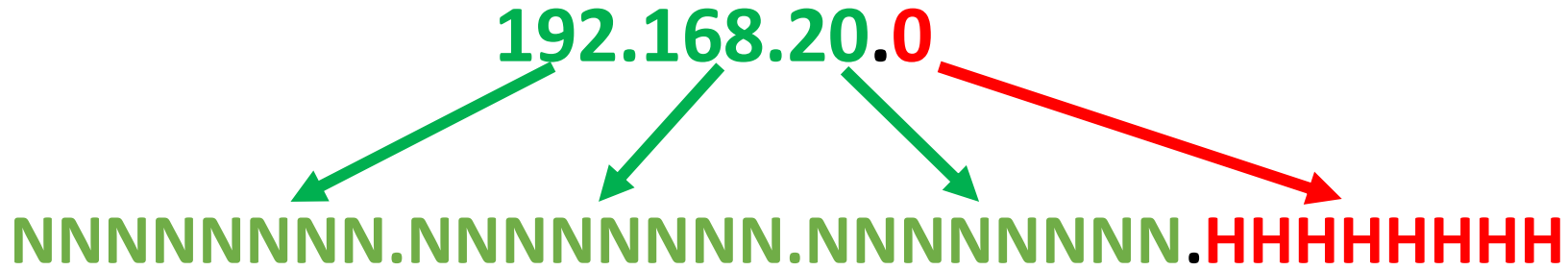
1	2	3
(2)	(4)	(8)
1	10	000
0	01	111
	11	001
	00	etc

8 BITS =
256
COMBINATIONS
OR ADDRESSES

A	1 - 126
B	128 - 191
C	192 - 223



HOST BITS

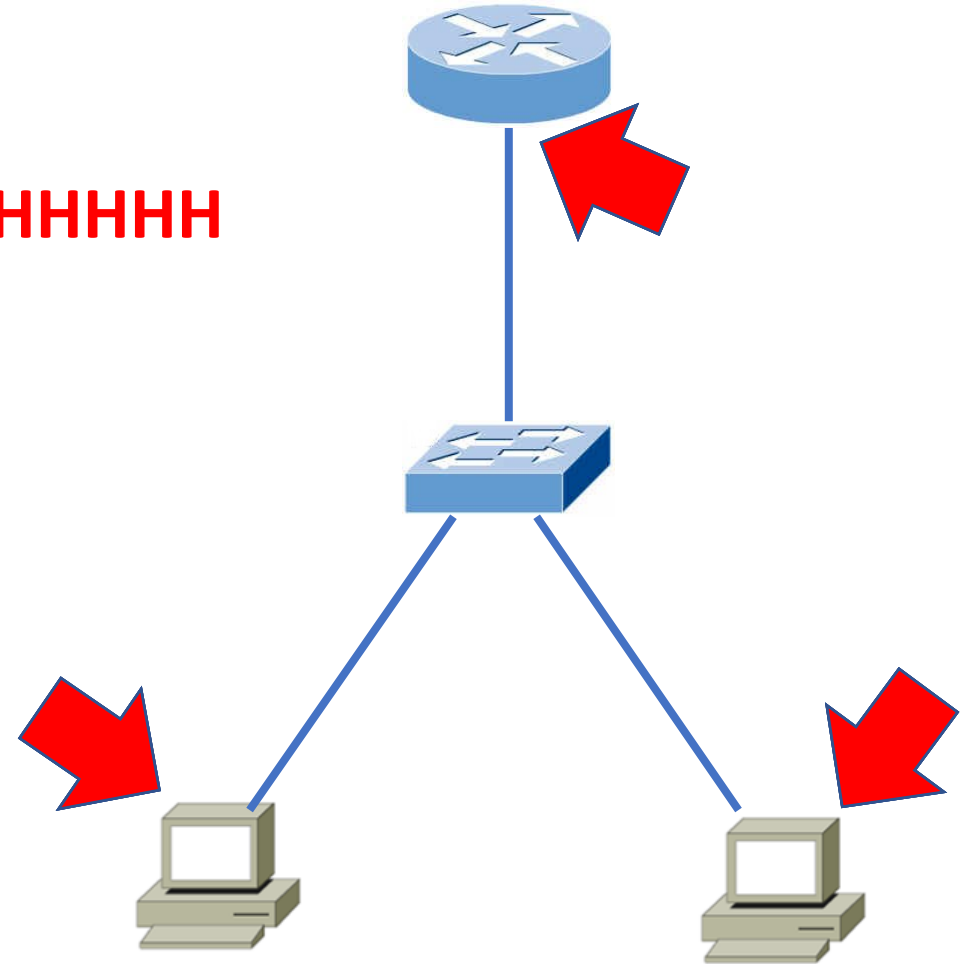


8 BITS WILL EQUAL 256 ADDRESSES

- FOR PORTS ON THE ROUTER
- FOR DEVICE ADDRESSES

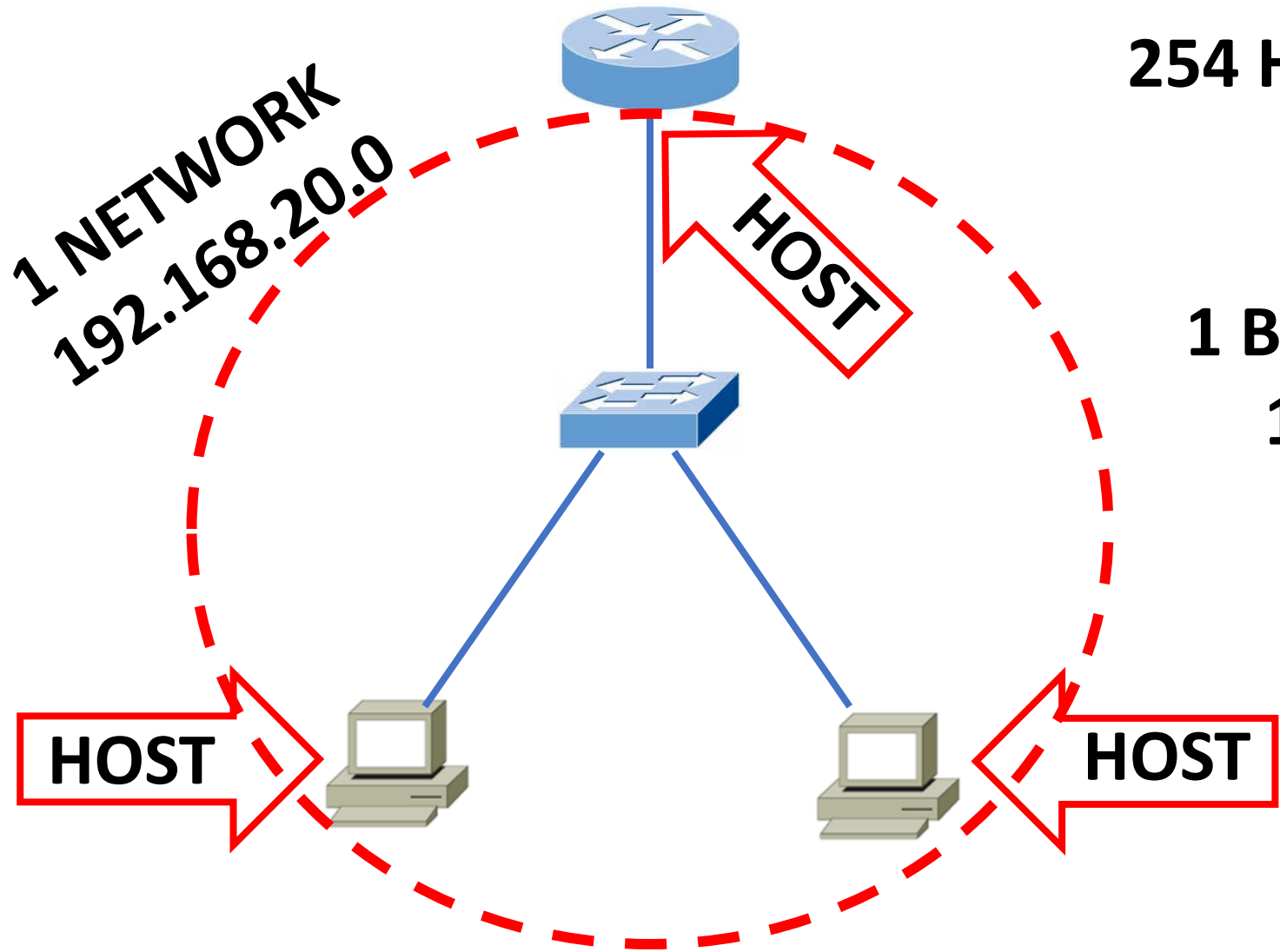
also for

- FOR NETWORK ADDRESSES
- FOR BROADCAST ADDRESSES



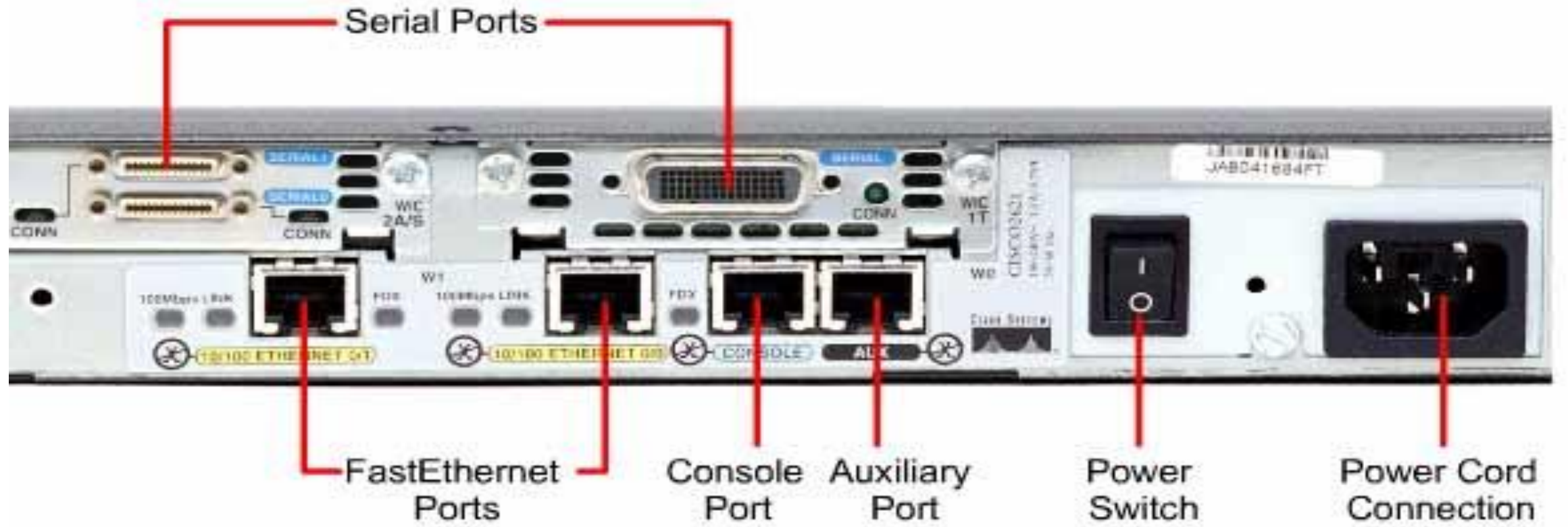
192.168.20.0

NNNNNNNN.NNNNNNNN.NNNNNNNN.HHHHHHHH



254 HOST ADDRESSES

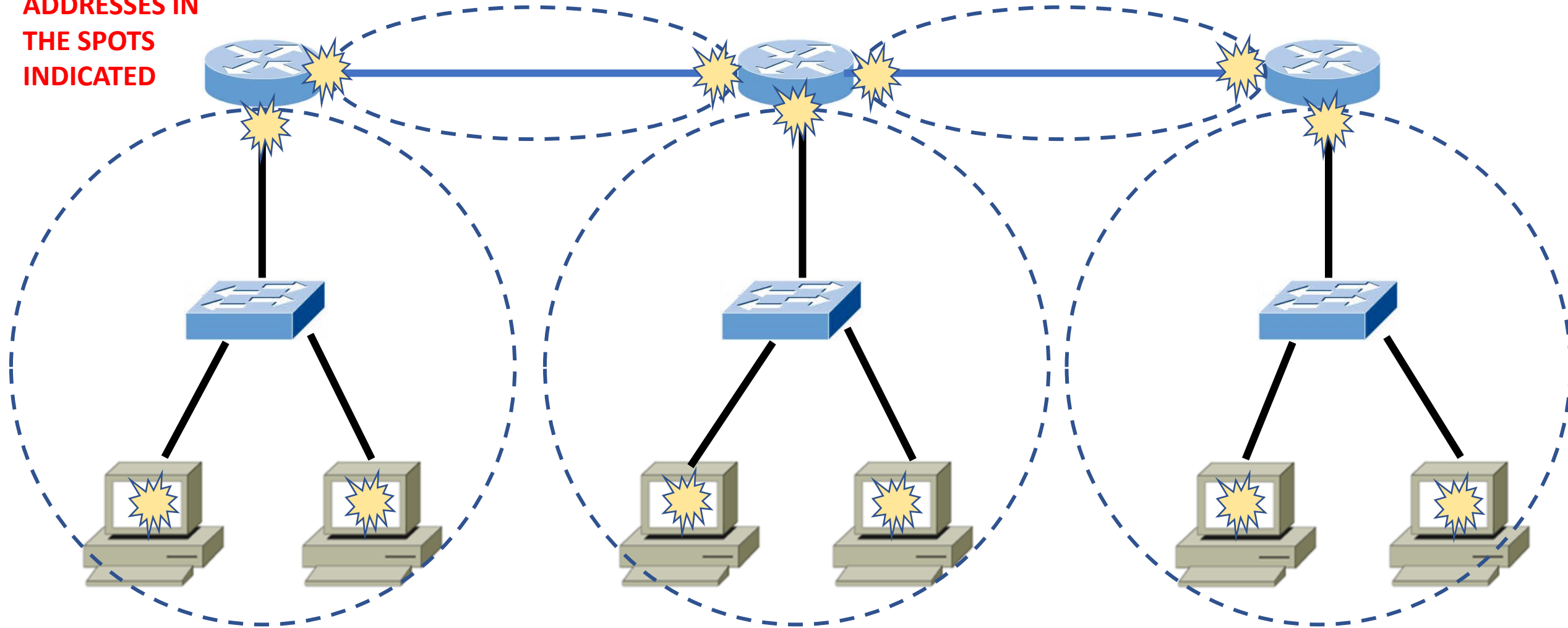
1 BROADCAST ADDR
192.168.20.255



USE THE TABLE
YOU JUST
CREATED TO
ENTER THE
ADDRESSES IN
THE SPOTS
INDICATED

192.168.20.0

NNNNNNNN.NNNNNNNN.NNNNNNNN.HHHHHHHH



SUBNET MASK: _____

SUBMIT YOUR HANDS ON FINAL HERE

https://1drv.ms/u/s!AnWPGIP55DPsif5QOt9FL-UW_SeRMQ?e=Xrahjl

Thank you!

Make sure you enter your last and first name

